

# *Euroclean* **roboCLEANZ** automatic vacuum cleaner

**YOU CHILL.  
IT CLEANZ.**



SELECTED  
**Superbrand**  
INDIA 2009-10  
CONSUMER VALIDATED

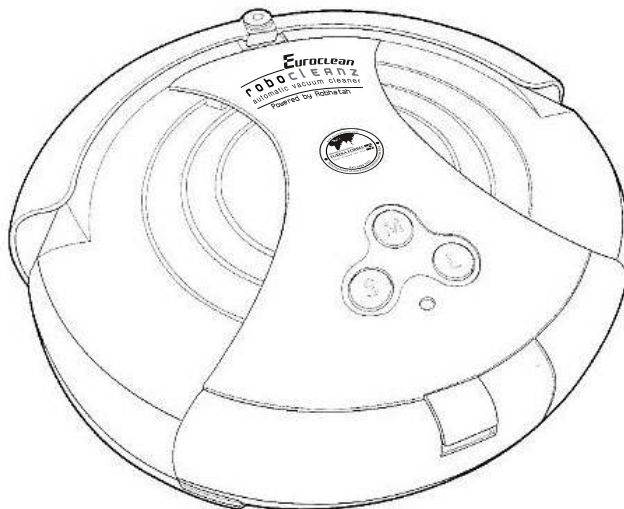
**mera  
brand**  
India's most preferred brand

Dear Customer,

Thank you for purchasing Euroclean robocleanz.

The Euroclean robocleanz can be used widely in your home or office to clean floor bare/carpeted. Also it works like magic in places which are not easily accessible under the sofa, bed etc. With the help of this intelligent floor cleaner, you can now leave your worries on floor cleaning to robocleanz.

Euroclean robocleanz is only recommended for indoor use. It can be used to clean floor surfaces including hardwood, linoleum, tile and low-to medium-pile carpets.



## CONTENTS

|                                       |    |
|---------------------------------------|----|
| Accessories                           | 3  |
| Parts of Euroclean robocleanz         | 4  |
| Turning your Euroclean robocleanz ON  | 5  |
| Maintaining your Euroclean robocleanz | 6  |
| Intelligent path judgement            | 7  |
| Do's & Don'ts                         | 8  |
| Battery Performance                   | 8  |
| Troubleshooting                       | 9  |
| Warranty                              | 10 |
| Post Warranty                         | 12 |
| Technical Specifications              | 12 |
| Euroclean robocleanz SUPPORT          | 13 |

When you unpack the Euroclean robocleanz, you will find your Euroclean robocleanz together with the following attachments:

1. Battery Charger - 1
2. Rechargeable Battery Pack (Installed) - 1
3. Filter Mesh - 1
4. Side Brush - 1
5. Dusting Brush - 1
6. Operating Manual – 1



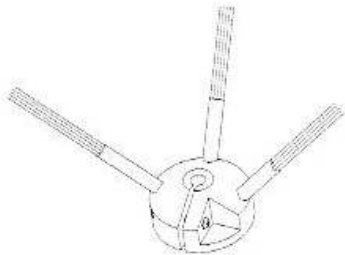
Charger



Rechargeable Battery Pack



Filter Mesh

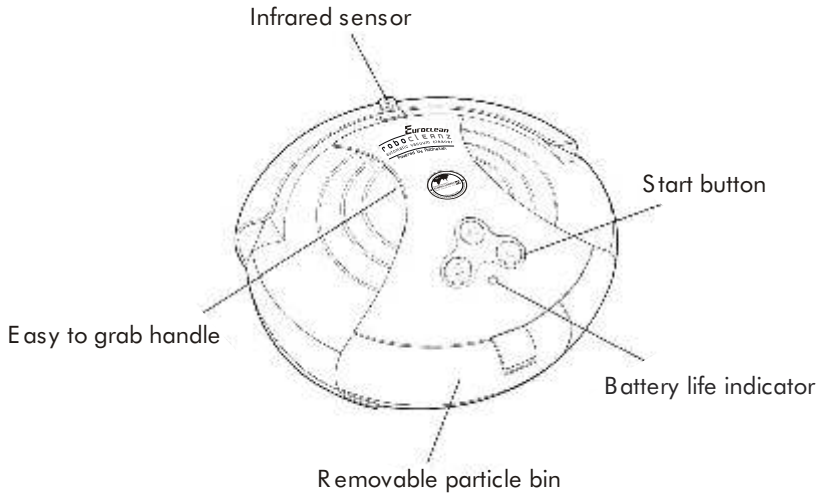


Side Brush

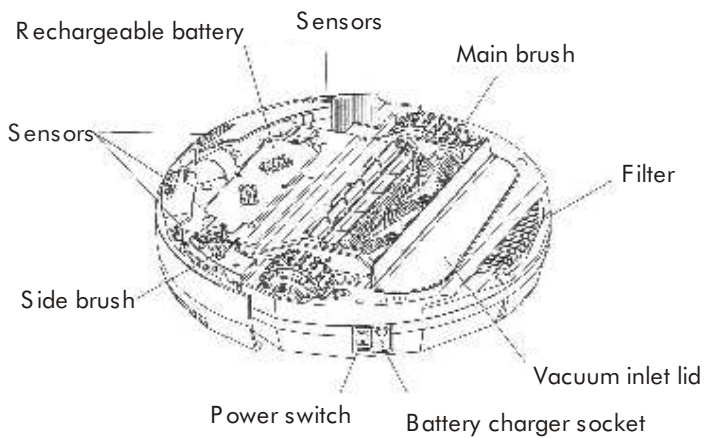


Dusting Brush

Euroclean robocleanz has the following parts:



### Surface

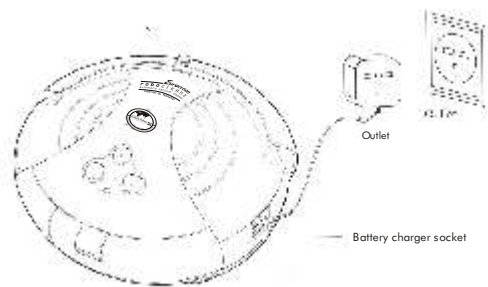


### Bottom

Turning your Euroclean robocleanz ON:

1. Please ensure the battery is fully charged before starting the Euroclean robocleanz.
2. Please tidy unfixed articles on the floor before using the Euroclean robocleanz, and keep it away from the frills at edge of carpet and power lines, etc. on the floor as much as possible.
3. Turn on the main power start button on the side of the Euroclean robocleanz, there are three function start buttons: Spot, Clean and Max, representing three different cleaning modes.
  - A. Spot mode(S): The Euroclean robocleanz can make repeated spiral cleaning within the scope of 3 feet of diameter, focusing to clean a spot for 4 minutes.
  - B. Clean mode (M): The Euroclean robocleanz will automatically clean the room for 30 minutes. The mode is applicable for cleaning small room.
  - C. Max mode (L): The Euroclean robocleanz won't stop running until complete consumption of its power.
4. The maximum working time for the Euroclean robocleanz is about 60 minutes\*, which can meet the requirements for cleaning a normal room. If the battery power is about to run out, the battery life indicator will become red, and it will stop working. Charging of battery is needed when this happens.

Refer to the following illustration for charging method

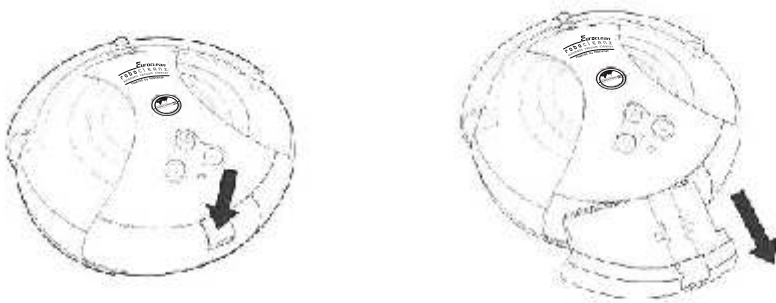


\* Subject to battery condition and the charge.

Maintaining your Euroclean robocleanz:

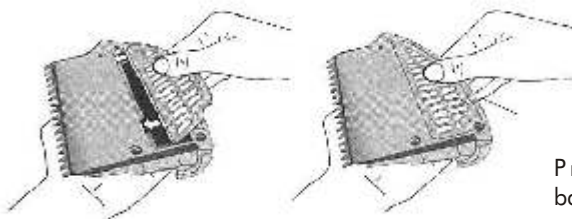
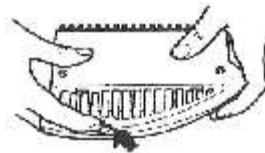
1. How to empty the bin

- a. Turn off the power switch.
- b. Press down the bin clip and pull out the bin as per following illustrations:
- c. Clear the bin.
- d. In inserting the bin, press the clip for facilitating inserting.



2. How to clean the filter mesh

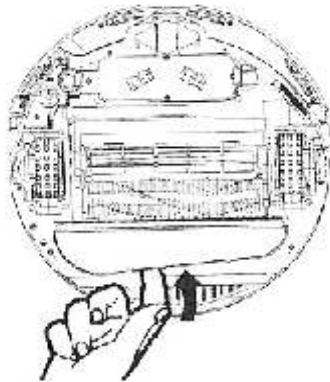
- a. Turn the bin upside down.
- b. Press the bottom slightly, take the filter mesh out as per following illustrations:
- c. Clear the dirt on the filter mesh.
- d. Fit the filter mesh back to the bin.



Press the clip slightly and put the bin back to the robocleanz.

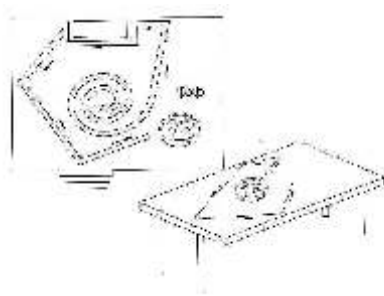
### 3. How to clean the vacuum inlet lid

- a. Turn off the power switch; turn the Euroclean robocleanz upside down on flat surface.
- b. Take the Vacuum Inlet Lid out as per following illustrations:
- c. Clean the Vacuum Inlet Lid and the fan-shaped mechanism to ensure good ventilation.
- d. Guide the hinge tabs on the Vacuum Inlet Lid back into their holes carefully.



### Intelligent Path Judgment

Euroclean robocleanz is intelligently controlled so it operates powerfully to avoid any obstruction and will not fall down from a table, staircase or pathway.



Please remove small/breakable objects such as vase, small paper box etc. before switching on the Euroclean robocleanz.

Attention should be paid to the following points:

1. If the Euroclean robocleanz is switched on but stops after the short music playing, this may mean the battery is low or off and charging is needed.
2. Please do not use the Euroclean robocleanz on high-pile carpets.
3. Avoid using Euroclean robocleanz where there are objects such as clothing, power cords, towels, etc. As these things may entangle the brushes of the Euroclean robocleanz and drain the battery power.
4. It is good to turn off the power switch after using the Euroclean robocleanz and must be fully charged if it's not used for a long time. Take battery out of the unit and store the battery and unit at a cooler place when it's not being used.
5. Keep the Euroclean robocleanz dry and clean. Contact with liquids must be strictly avoided.

#### Battery Performance

- Battery must be charged only with the charger provided with the Euroclean robocleanz.
- Never use a modified or damaged charger.
- Battery Type : Nickel – Cadmium
- Capacity Rating : 1500mAh
- Voltage : 14.4V
- Charging time : 4 hours (for fully discharged battery)
- Up to 300 recharge cycles

### Troubleshooting:

1. What should we do if the Euroclean robocleanz falls down from the edge of stairs?

Solution: Wipe away the dust on the probe at the bottom of the front plate with dry cloth.

2. What should we do if the Euroclean robocleanz stops running and all indicators are on during cleaning?

Solution: Check whether there are large or bar-shaped junks blocked in the main brush or left and right wheel, and clean the bin if it's full.

3. What should we do if the Euroclean robocleanz is fixed at one place and rotates?

Solution: Check whether there are junks blocked at the left and right wheel and clean away the dust on the wheels and on the sensors at the bottom.

4. What should we do if the battery can't be recharged?

Solution: Firstly, check whether the battery is correctly installed and you should hear two sounds when installing the battery.

## Warranty

Euroclean robocleanz Vacuum Cleaners are warranted against defects arising from faulty design, workmanship and materials for a period of 12 months from the date of invoice, subject to the following conditions.

1. The Customer will notify the Company in writing promptly of any defects noticed and give the Company or its authorised agent adequate opportunity to inspect, test and remedy them for which the Customer will deposit the goods if so required by the Company, with the Company's office/service centre along with original invoice, in the city where they are sold.
2. Inspection and Test Report of the Company's office /service centre will be final and binding under the Warranty for determining defects, repairs /alterations required or carried out or certifying working of the goods thereafter.
3. The Company or its authorised agent will be entitled to retain any defective part replaced under the Warranty.
4. Notwithstanding anything to the contrary contained in or implied by this Warranty:
  - a. The Company's liability under this Warranty shall be limited to the first sale of the goods by the Company to the Customer and will not apply or extend to any secondary sale of goods by the Customer.
  - b. The Company's liability under this Warranty shall be limited only to defects in the goods which occur under the conditions of normal operation of the goods and their proper and prescribed use. This Warranty does not cover or extend to defects which are determined by the Company or its authorized agents as occurring or resulting from or attributable to negligence, abuse, misuse, faulty care, operation or maintenance or repairs, alterations to the goods or any part thereof by others of the use of the goods on electrical supply for which they are not designed or damage caused by lightning or other electrical disturbances or interruptions.
  - c. The Customer will have no claim against the Company, its employees and its authorised agents or franchisees under or pursuant to this Warranty in respect of death or injury to the Customer or any other person or loss or damage to

any property caused by or due to equipment failure, breakdown or accident, fire or operation or utilisation of the goods otherwise than in accordance with User Guide or by or due to any other cause or circumstance beyond the control of the Company.

- d. The Company's liability under this Warranty shall in no event and under no circumstances exceed the price paid by the Customer to the Company for the goods stated in the invoice.

### General

For the purpose of this Warranty, the following expressions shall have the following meanings respectively:

1. 'The goods' shall mean the goods described in the Order Form.
2. 'The Customer' shall mean the original purchaser of the Goods from the Company.
3. 'The Company' shall mean 'EUREKA FORBES LIMITED'.
4. 'General Terms and Conditions' shall mean the terms and conditions agreed upon by the Customer and the Company printed on the Order Form.
5. 'Invoice' shall mean the Invoice issued by the Company to the Customer describing the goods and indicating, inter alia, the total purchase price thereof and the name of the Customer.
6. 'User Guide' shall mean the instructions for installation, use and maintenance contained in the leaflet supplied by the Company.

### Post-Warranty

1. The Customer may be offered a yearly Service Contract in the prevailing Company rates and terms.

2. In case the Customer does not wish to enter the Service Contract, he has the option of calling our Service Centre and having his 'Euroclean' serviced on an actual basis i.e by paying for Labour cost and Spares needed to attend to that Service /Complaint call at the prevailing Company rates. Such service will be rendered by the Company in towns /places where the Company has its Service Centres.
3. The Company will provide free servicing of the goods brought to its Service Centre by the Customer, provided that all expenses of transporting the goods to and from the Service Centre shall be borne by the Customer directly.
4. If during such servicing it is necessary for the Company to replace or repair defective components or parts, the Customer shall be required to pay for the same as per the Company's prevailing price-list.

| Technical Specifications* |   |
|---------------------------|---|
| Rechargeable Battery      | 14.4 V, 1500 mAh  |
| Charging adapter          | 24 V, 500 mA  |
| Wheel Motor               | 12 V, 100 RPM, 2.6 Kg-cm  |
| Brush Motor               | 12 V, 1000 RPM, 0.5 Kg-cm   |
| Main Brush                | 3 mm Bunch of 0.1 thickness bristles<br>4 Rows with 40 bunches per row                                      |
| Side Brush Motor          | 12 V, 220 RPM, 0.2 Kg-cm  |
| Side brush                | 3 mm Bunch of 0.4 thickness bristles<br>3 bunches placed at 75 degrees apart<br>with bristle height of 5 cm |
| Power adapter connector   | M5 DC power jack connector  |
| Cliff Sensors             | Infrared (IR)   |
| Power/Voltage             | Battery Charger-Input 230 V AC, 50 Hz<br>Output 24 V DC, 500 mA   |

\*At Mean Sea Level (MSL) (All figures are nominal values)

| Size / Shape Details:                    |   |
|--|---|
| robocleanz                               | Φ 35 cm, 9.2 cm height  |
| Base Clearance                           | 2 cm  |
| Dummy wheel                              | Φ 3.5 cm  |
| Dummy wheel suspension                   | 1 cm  |
| Traction wheel                           | Φ 6 cm, 2.4 cm wide   |
| Traction wheel suspension                | 2 cm  |
| Length of the vacuum channel             | 23 cm   |
| Main Brush                               | Φ 5.4 cm, 17.5 cm length  |
| Side Brush                               | 3mm Bunch of 0.4 thickness bristles,<br>3 bunches placed at 75 degrees<br>apart with bristle height of 5 cm |
| Height of cliff sensor from<br>the floor | 3 cm  |

### Working Algorithms

| Condition                                     | Result  |
|---|---|
| Press Spot/S/I switch                         | Machine will start working in spot mode and will make repeated spiral cleaning within the scope of 3 feet of diameter, focusing to clean a spot for 4 min |
| Press Clean/M/II switch                       | The machine will automatically clean room for 30 min. The mode is applicable for cleaning small rooms   |
| Press Max./L/III switch                       | The machine won't stop running until complete consumption   |
| When tyre overload occurs<br>(tyre stucked)   | After 8 seconds, robot will stop and all the Switches will glow blue, LED becomes Red   |
| When Brush overload occurs<br>(Brush stucked) | After 6 seconds, robocleanz will stop and all the Switches will glow blue, LED becomes Red  |

### Euroclean robocleanz SUPPORT

For additional queries, please email our friendly support staff at:

EUREKA FORBES LIMITED, Corporate Office:

B 1/B2, 7th Floor, 701, Marathon Innova, Marathon NexGen, Off Ganpatrao Kadam Marg,  
Lower Parel, Mumbai - 400 013, India.

Contact: Phone +91 22 3044 9700 | Fax +91 22 3044 9701

[www.eurekaforbes.com](http://www.eurekaforbes.com)



**EUREKA FORBES**   
Your friend for life

B1/B2, 701, 7th Floor, Marathon Innova, Marathon NextGen, Off Ganpatrao Kadam Marg,  
Lower Parel, Mumbai 400 013, India.  
Tel.: +91 22 3044 9700, 3044 9888 , Fax: +91 22 3044 9701.